

DOUBLE PIPE CLAMPS Center Mounting Hole

MATERIAL: HRP&O, CR or HD Galv Steel G90

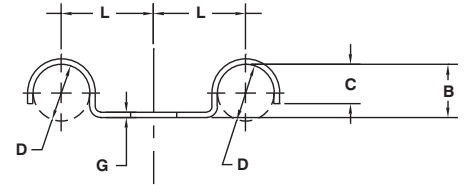
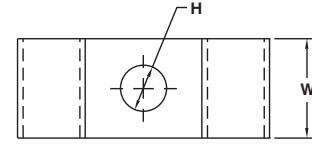
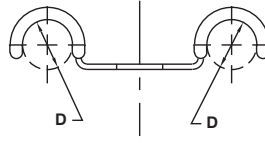
FINISH: None (Plain), Zinc Plated or Pre-plated

CUSHION: Black Vinyl, 1/32" Thick. We Recommend Vinyl Coated Parts Be Produced With HD Galv Steel G90

CMV



CM



Part Number	D	H	L	B	C	G	W
	Clamping Diameter ±.015	Hole Diameter ±.005	Center To Center ±.031	Base To Top Of Radius ±.015	Ref Only Closure ±.015	Gage See Pg. 40	Width ±.010
CM-0307	.187	.218	.437	.156	.093	.048	.500
CM-0309	.187	.281	.437	.156	.093	.048	.500
CM-0407	.250	.218	.437	.093	.093	.048	.500
CM-0409	.250	.281	.437	.125	.093	.048	.500
CM-0507	.312	.218	.531	.296	.265	.048	.625
CM-0509	.312	.281	.531	.296	.265	.048	.625
CM-0511	.312	.343	.531	.296	.265	.048	.625
CM-0607	.375	.218	.625	.343	.281	.048	.625
CM-0609	.375	.281	.625	.343	.281	.048	.625
CM-0611	.375	.343	.625	.343	.281	.048	.625
CM-0613	.375	.406	.625	.343	.281	.048	.625
CM-0709	.437	.281	.687	.375	.343	.048	.750
CM-0711	.437	.343	.687	.375	.343	.048	.750
CM-0713	.437	.406	.687	.375	.343	.048	.750
CM-0809	.500	.281	.812	.437	.250	.060*	.750
CM-0811	.500	.343	.812	.437	.250	.060*	.750
CM-0813	.500	.406	.812	.437	.250	.060*	.750
CM-0909	.562	.281	.875	.468	.400	.060*	.750
CM-0911	.562	.343	.875	.468	.400	.060*	.750
CM-0913	.562	.406	.875	.468	.400	.060*	.750
CM-1009	.625	.281	.625	.625	.500	.060*	.750
CM-1011	.625	.343	.625	.625	.500	.060*	.750
CM-1013	.625	.406	.625	.625	.500	.060*	.750
CM-1109	.687	.281	.625	.625	.437	.060*	1.000
CM-1209	.750	.281	.875	.718	.500	.060*	.750
CM-1211	.750	.343	.875	.718	.500	.060*	.750
CM-1213	.750	.406	.875	.718	.500	.060*	.750
CM-1309	.812	.281	1.250	.718	.406	.090	1.000
CM-1311	.812	.343	1.250	.718	.406	.090	1.000
CM-1313	.812	.406	1.250	.718	.406	.090	1.000
CM-1409	.875	.281	.906	.843	.687	.090	.750
CM-1411	.875	.343	.906	.843	.687	.090	.750
CM-1413	.875	.406	.906	.843	.687	.090	.750
CM-1609	1.000	.281	1.062	.906	.750	.090	.750
CM-1611	1.000	.343	1.062	.906	.750	.090	.750
CM-1613	1.000	.406	1.062	.906	.750	.090	.750
CM-1713	1.062	.406	1.156	.968	.968	.120	1.000
CM-1813	1.125	.406	1.000	.468	.562	.120	1.000
CM-1913	1.187	.406	1.250	1.000	.750	.120	1.000
CM-2009	1.250	.281	.875	.500	.375	.120	.750
CM-2113	1.312	.406	1.187	.531	.531	.120	.750
CM-2209	1.375	.281	1.187	1.375	.687	.120	1.000
CM-2313	1.437	.406	1.421	.562	.718	.187	1.000
CM-2517	1.562	.531	1.625	.687	.500	.187	1.250

Most of these parts over 1" diameter, and many of the other parts, can be furnished with other bolt hole sizes, subject to the type of tooling and bolt head size.

Parts can be furnished with clamping ends coated with vinyl plastisol. Coating will reduce clamping diameters by 1/16".

Parts should be plated or G90 material used before coating.

*Not available in G90 material.